



Motorcycle Electronic Cruise Control

Automotive throttle connection examples

MOTORCYCLE CRUISE CONTROLS

**MotorCycle Setup Pty. Ltd.
A.B.N. 94 798 167 654
AUSTRALIA**

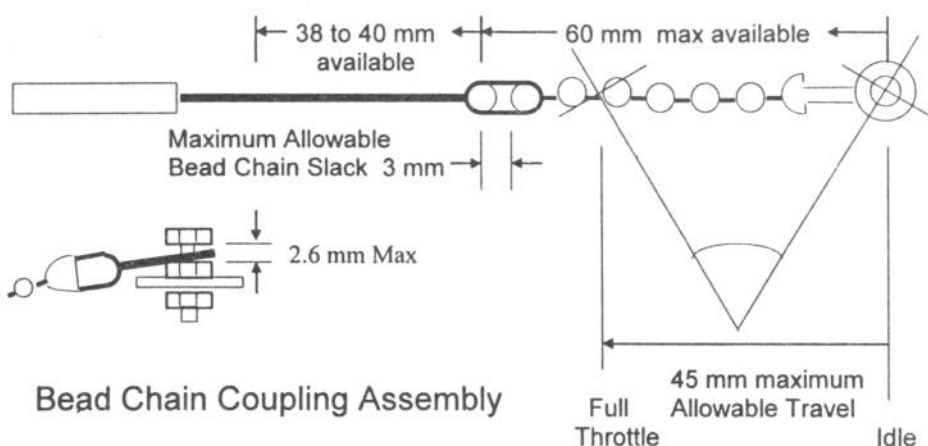
WARNING: - This manual contains some suggestions for suitable connection methods to the vehicles throttle system. These are drawn from automotive aftermarket cruise control installation and are generally NOT suitable for motorcycles due to the space limitation on most motorcycles and the risk of parts fouling and jamming the throttle.

Normally connection to the motorcycle throttle system would be done using our 'Cable Interface Unit', to ensure safe connection to the throttle system.

Most 'bikes' based around car engines do not need a Cable Interface Unit, and in many cases fitting the Cable Interface Unit is not possible due to limitations of cable fitting, travel, length etc.

As a result, the cruise control actuator cable must be connected directly to the vehicle's throttle. The following drawings show some examples of connection methods possible with the hardware supplied in the cruise control kit, and some safety requirements.

Safe Bead Chain Installation Requirements:

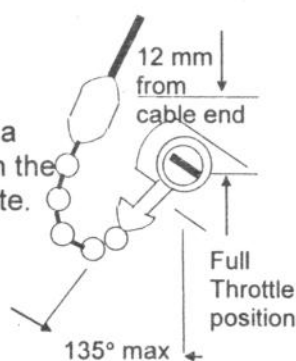


Basic Rules:

1. **Actuator cable end must be greater than 12 mm from the full throttle position using a straight line through it to the idle position.**
2. **Maximum Throttle travel at the point connected must not be greater than 45 mm.**
3. **Maximum allowable rotation for the bead chain coupling on the throttle linkage must not exceed 135 degrees.**
4. **Never use less than 7 bead chain links as stated in the installation manual.**

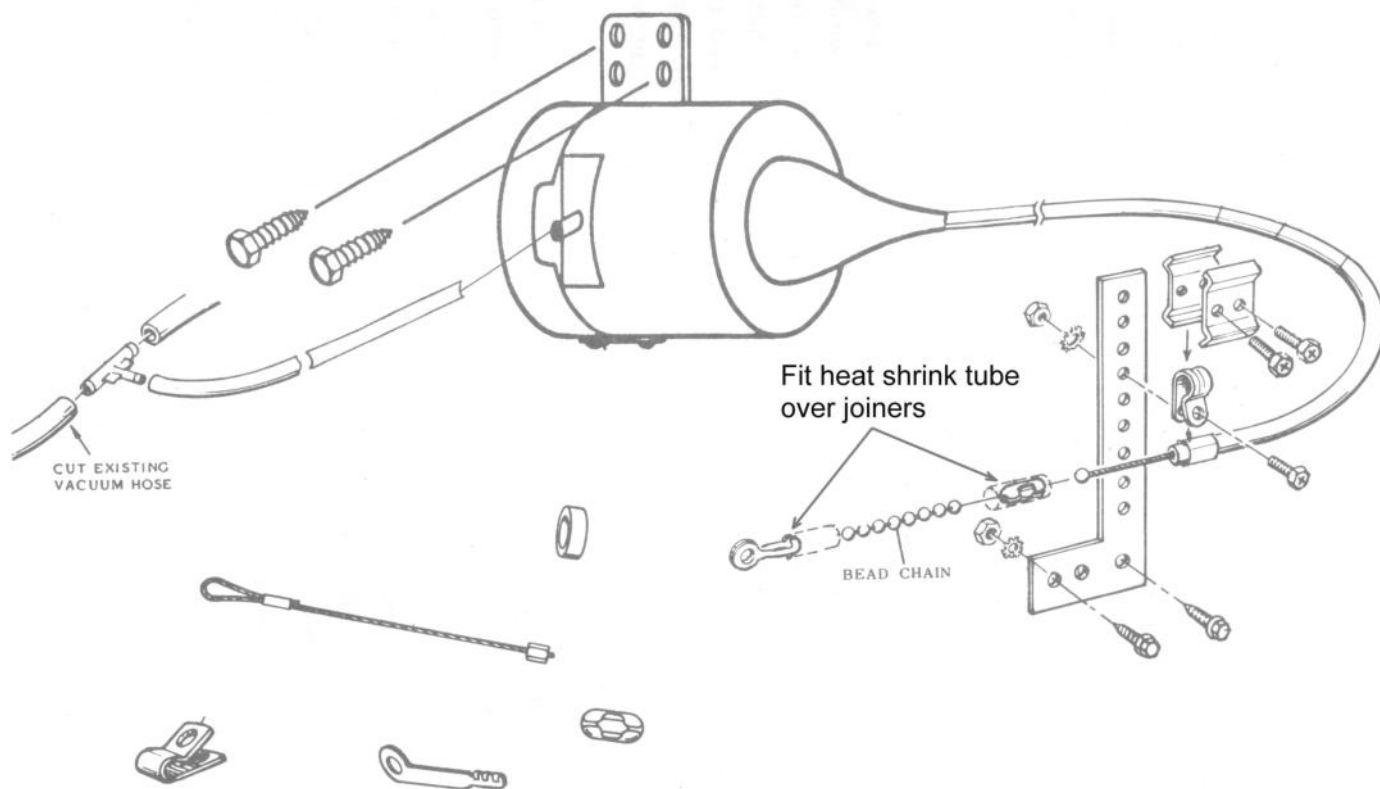
Note:

If the ball on the cable is never closer than 12 mm from the full throttle position, then even if mounted to pull in a vertical direction, the bead chain coupling can not reach the 180 degree position necessary to cause the lock up state.

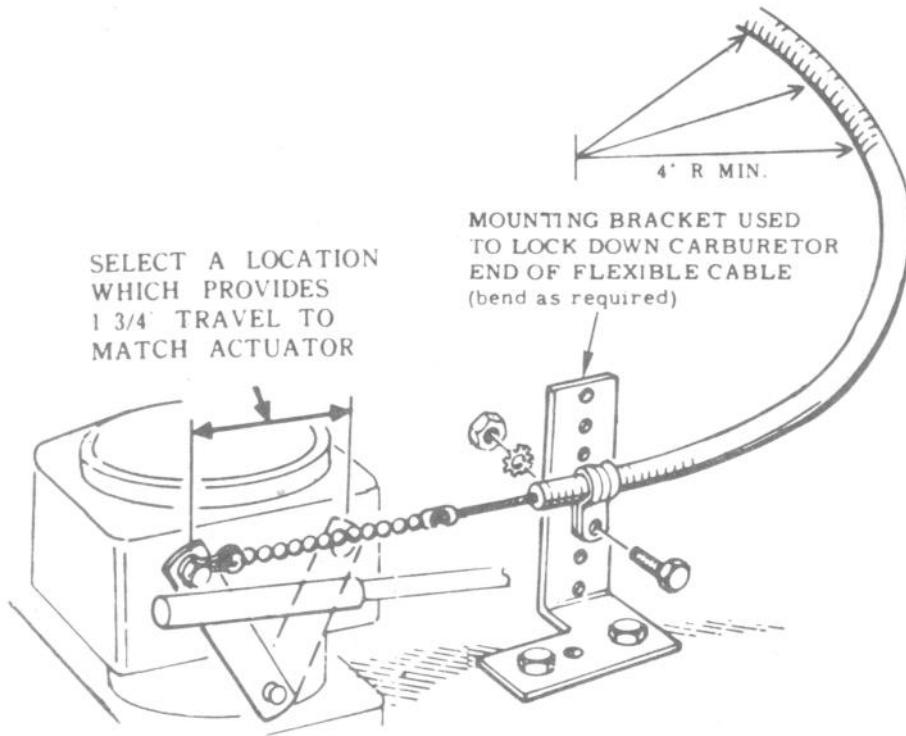


Match the actuator pull to throttle travel, so to be greater than 40 mm, but less than 45 mm, to avoid a condition where the actuator is pulling past the full throttle stop and introducing the possibility of damaging the linkage.

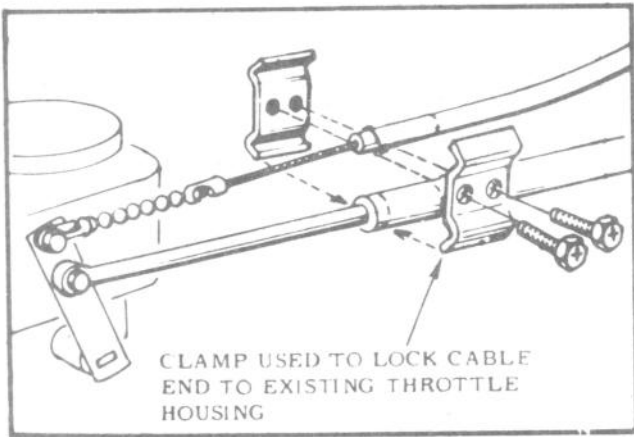
Overview of actuator installation.



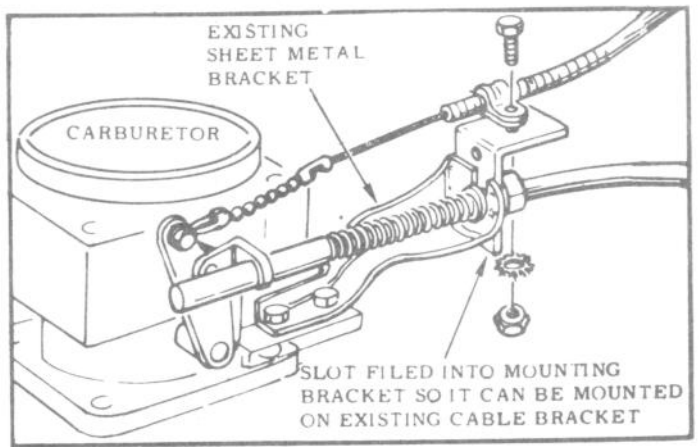
Attaching the actuator cable outer.



FLEX CABLE CONDUIT MOUNTING



ALTERNATE FLEX CABLE MOUNTING TECHNIQUE



ALTERNATE FLEX CABLE MOUNTING TECHNIQUE

Attaching the cable to the throttle.

