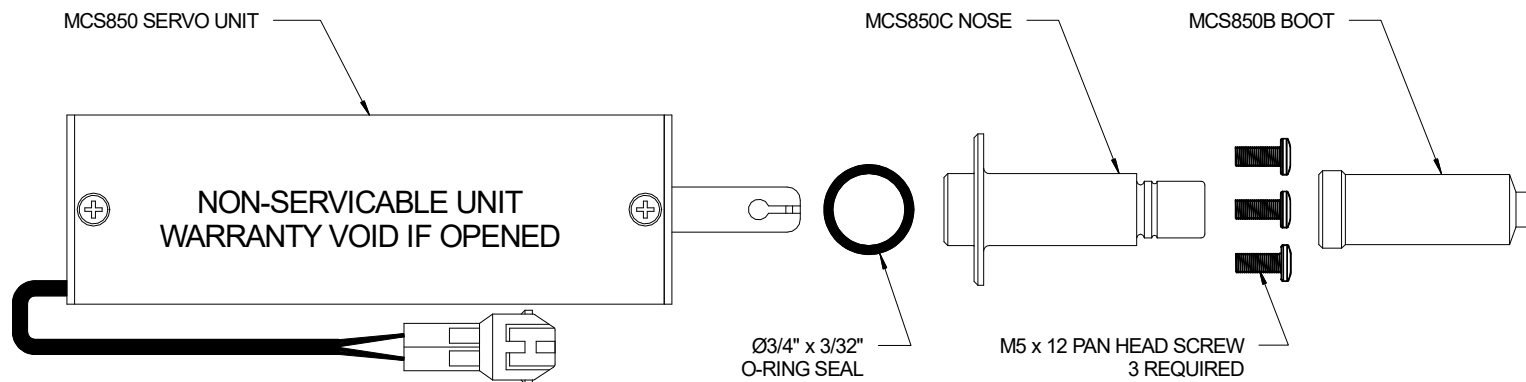
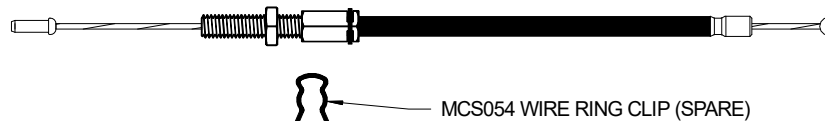


PARTS SUPPLIED IN KIT



MCS SERVO CABLE ASSEMBLY
OR PARTS MAY BE SUPPLIED
IN SOME CIRCUMSTANCES



STEP 1: SCREW ADJUSTOR IN TO NOSE PIECE
LEAVE 1/3RD OF THREADS EXPOSED 8MM (5/16")
DO NOT OVERTIGHTEN,
FURTHER ADJUSTMENT MAY BE REQUIRED
DURING KIT INSTALLATION

