



Motorcycle Electronic Cruise Control

MCS850 Electric Throttle Servo. Servo Cable Assembly and Installation

17 July 2024

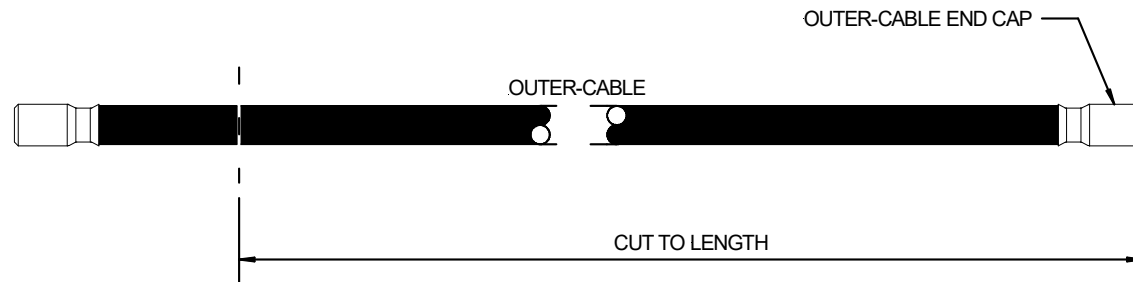
MOTORCYCLE CRUISE CONTROLS

**MotorCycle Setup Pty. Ltd.
A.B.N. 94 798 167 654
AUSTRALIA**

Servo Cable Preparation.

Cut the **barrel nipple** (NOT the ball nipple) off the end of the cable and pull the inner cable (wire rope) out of the cable. Remove both adjusters from the cable. Discard the **plain** adjuster. **Keep the adjuster with the slots for the retaining clip.**

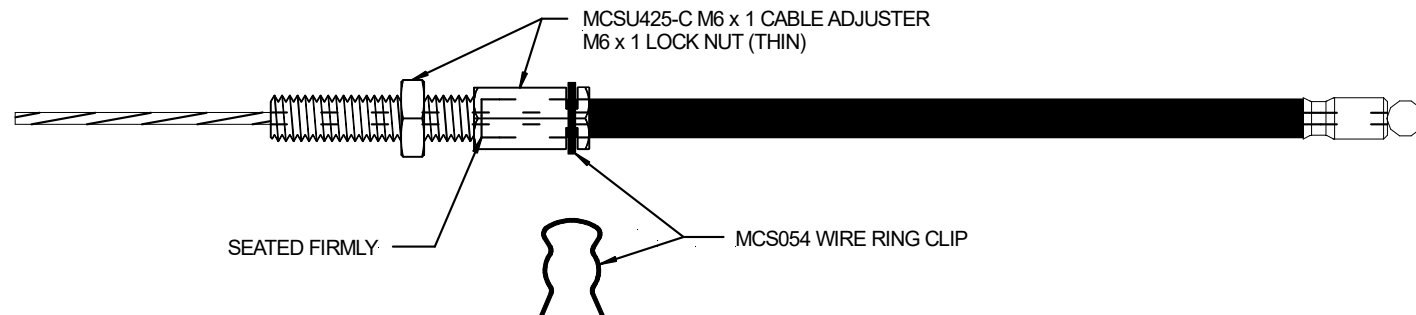
STEP 1: CUT OUTER CABLE TO LENGTH.
USE FINE-TOOTHED HACKSAW OR
SHARP CUTTERS.



STEP 2: INSERT INNER-ROPE CABLE.
ENSURE BALL NIPPLE IS AT CAP END.
PULL THROUGH ALL THE WAY.

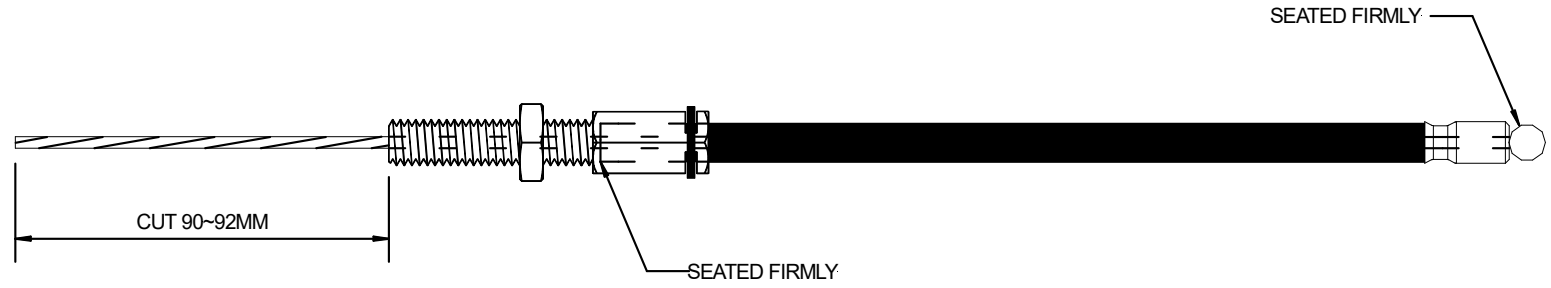


STEP 3: INSTALL CABLE ADJUSTOR.
ENSURE ADJUSTOR IS SEATED FIRMLY.
INSTALL WIRE RING CLIP.

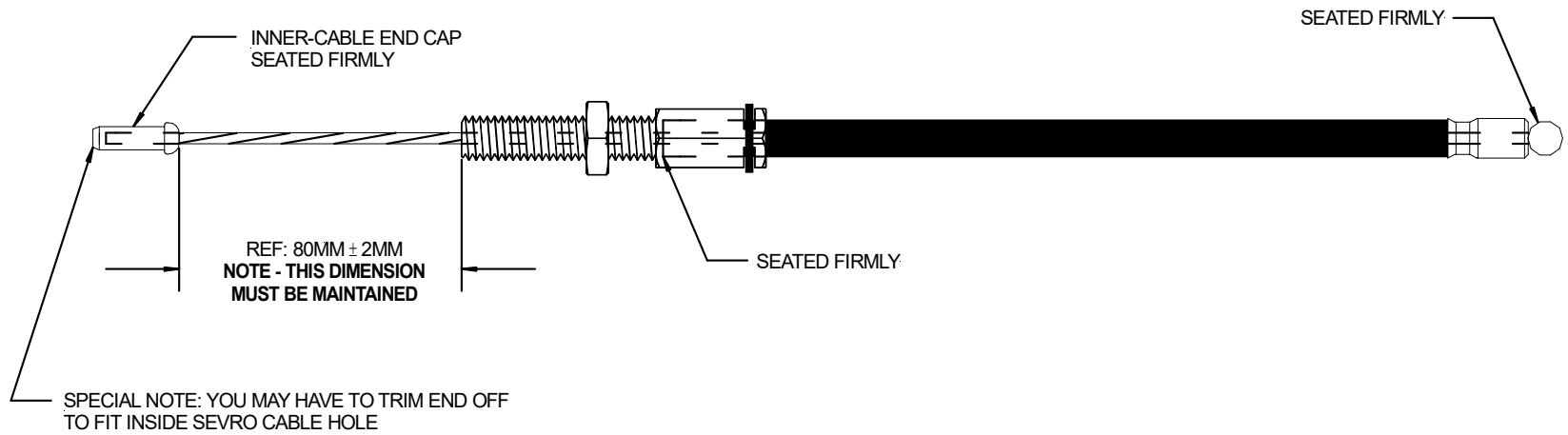


STEP 4: CUT INNER-ROPE
CABLE TO 90MM AS SHOWN.

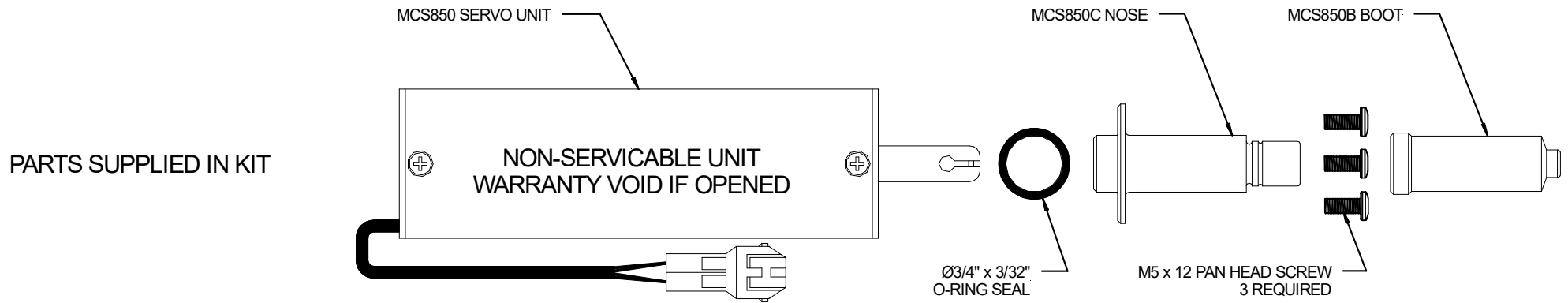
ENSURE ALL COMPONENTS
ARE SEATED FIRMLY!



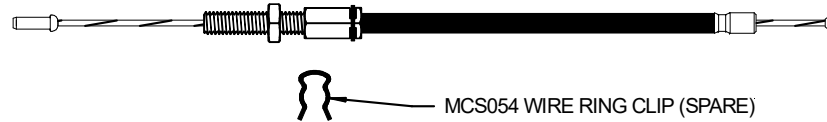
STEP 5: INSTALL CABLE CAP.
USE PLIERS OR CRIMPING TOOL
TO SECURE FIRMLY.



Servo Assembly.



MCS SERVO CABLE ASSEMBLY
OR PARTS MAY BE SUPPLIED
IN SOME CIRCUMSTANCES

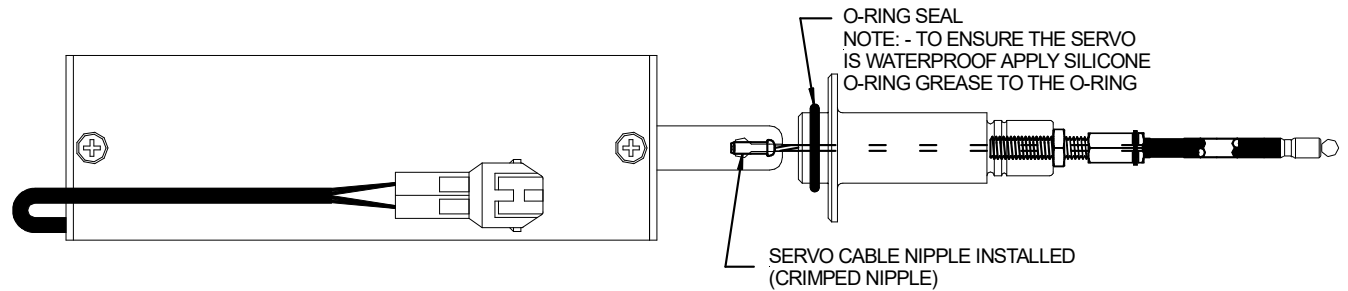


STEP 1: SCREW ADJUSTOR IN TO NOSE PIECE
LEAVE 1/3RD OF THREADS EXPOSED 8MM (5/16")
DO NOT OVERTIGHTEN,
FURTHER ADJUSTMENT MAY BE REQUIRED
DURING KIT INSTALLATION



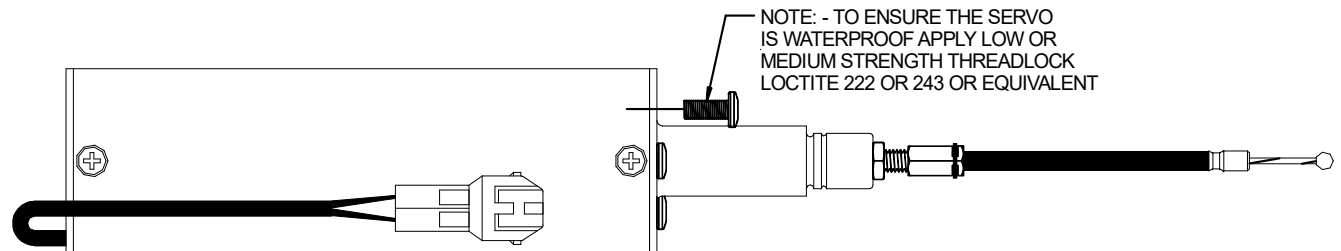
STEP 2: APPLY SILICONE O-RING GREASE TO O-RING. SLIDE O-RING ON TO NOSE. (WEATHER SEAL O-RING).

HOOK CABLE NIPPLE IN TO SERVO UNIT.



STEP 3: APPLY MEDIUM THREADLOCK (LOCTITE 243 OR SIMILAR) TO M5 SCREWS.

SCREW NOSE TO SERVO UNIT BUT DO NOT OVERTIGHTEN SCREWS



STEP 4: APPLY SILICONE SPRAY LUBRICANT TO RUBBER BOOT.

CHECK WIRE RING CLIP IS SECURE BEFORE INSTALLING BOOT.

SLIDE ON TO SERVO.

